



Info-Explorer



OrchidSystems

Sage Tech Partner

“A powerful, affordable BI tool supporting integrated analysis & budgeting”

Why use Info-Explorer?

Analyze business performance in multi-dimensional cubes, with the familiarity of a spreadsheet-type layout. Combine data from multiple sources. Ideal for integrated analysis and budgeting.

Data Sources & Processing

- Fed from your Sage 300 database, with background in-memory processing
- Include data from other SQL & ODBC databases, e.g. CRM
- Incorporate user-defined calculations
- Work online or offline
- Export views to Microsoft Excel®, CSV or HTML
- Security options to protect your data



Combine with **Process Scheduler** to automate the refresh and distribution of Info-Explorer cubes.

OUR DECISION MAKING IS SO MUCH FASTER AND BETTER INFORMED NOW.



Slice & Dice Analysis

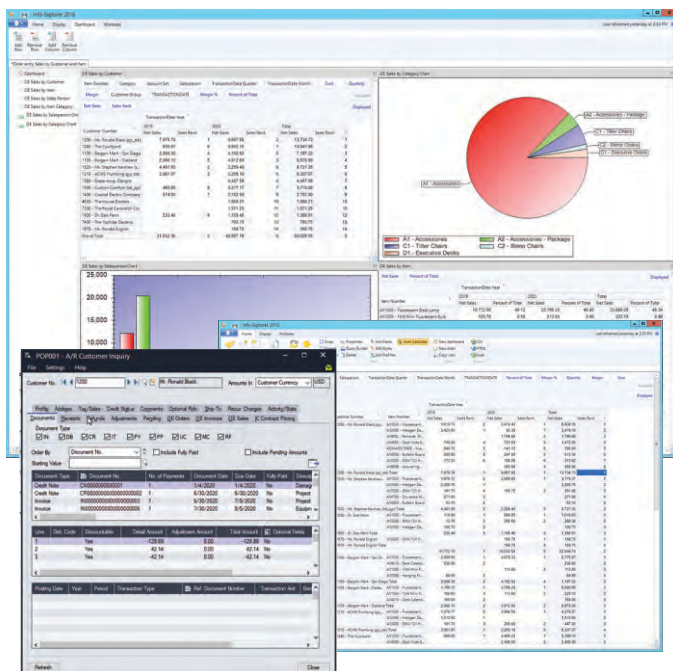
- Change dimensions (e.g. product, customer, region, period, employee) for clearer insight
- Dynamically control your view, filter your data, add and remove facts and dimensions
- Drill through to Sage 300 data entry screens for more information
- Roll up and consolidate to focus on high-level results

Presentation & Personalization

- Create and save multiple views, and convert to charts
- Create your own dashboards, highlighting exceptions and trends
- Apply your own formatting styles, e.g. 'traffic light' reporting
- Personalize, e.g. use custom styles to highlight amended data

Lite Edition – Free!

- A free, functional edition - no time limit, no commitment
- Add intuitive BI to any Sage 300 implementation
- Analyze your own data within pre-defined sample cubes
- No need to upgrade, unless you want additional features




Dashboard and View analyzing Sales Ranking, with drill-through to Sage 300 screen

Work *smarter* with Orchid

Budgeting Features

The Writeback edition lets you use the same interface for analysis and budgeting:

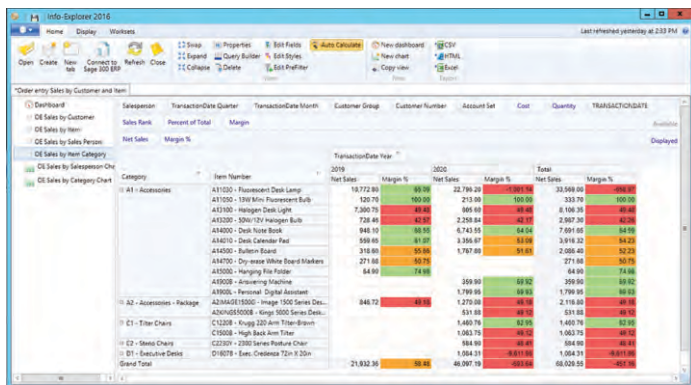
- Budget beyond General Ledger level
- Build budgets bottom-up or top-down
- Insert a budget total and let Info-Explorer populate the build-up
- Adjust budgets using multiple spread methods
- Maintain multiple budget versions
- Write budget data back to your Sage 300 database
- Combine actual and budget data for forecasting

 Use **Optional Tables** to store custom data in Sage 300, then incorporate it into your budgets and forecasts using Info-Explorer

Sample Cubes Included

Use them to simplify getting started, or as a base for creating your own cubes. Available for:

- Sage 300 GL, AR, AP, PO, PJC, IC, OE/Sales Analysis
- Sage 300 US & Canadian Payroll
- Orchid Extender, RMA, Bin Tracking
- Budgeting
- Selected 3rd Party products



Category	Item Number	Item Name	2019 Net Sales	Margin %	Total Net Sales	Margin %
A1 - Accessories	A11020 - Fluorescent Desk Lamp		187,722.80	89.70	22,789.20	89.80
	A11030 - 13W Mini Fluorescent Bulb		120.70	100.00	333.70	100.00
	A11100 - Hanger Desk Light		7,300.70	89.80	8,100.30	89.80
	A10300 - 10W 12V Hanger Bulb		728.40	45.00	2,258.40	45.00
	A14000 - Desk Nurse Book		948.10	86.50	6,743.55	84.04
	A14010 - Desk Calendar Pad		569.60	81.00	3,356.07	81.00
	A14060 - Bulletin Board		318.80	89.80	1,797.60	91.80
	A14700 - Dry-erase White Board Markers		271.60	86.70	2,771.60	86.70
	A10000 - Hanging File Folder		64.90	75.00	64.90	75.00
	A10000 - Archiving Machine		399.90	89.82	399.90	89.82
A2 - Accessories - Package	A19000 - Personal Digital Assistant		1,799.00	89.93	1,799.00	89.93
	A214001000 - Image 100 Series Desk...		1,270.00	86.50	2,714.00	86.50
	A214002000 - King 3000 Series Desk...		631.00	89.10	531.00	89.10
	C12200 - King 220 Arm Titan-Brown		1,480.70	82.55	1,480.70	82.55
C1 - Tiller Chains	C10000 - High Back Arm Filter		1,683.70	84.00	1,683.70	84.00
	C22000 - 2200 Series Posture Chair		884.00	88.40	884.00	88.40
	C11070 - Executive Desk		1,004.31	86.11	1,004.31	86.11
	C11070 - Executive Desk		21,832.30	86.80	48,397.50	86.80

View showing traffic light reporting