



Extender



OrchidSystems

Sage Tech Partner

“A cost-effective way to configure, customize and extend Sage 300”

Why use Extender?

- Customize Sage 300 without complex code
- All configurations and scripts stored securely in your Sage 300 database
- Easy to upgrade, no need to recompile your customizations
- Works with all Sage 300 core modules, plus 3rd Party modules developed in the SDK



Extender Configurator

The Configurator edition lets you tailor Sage 300 without writing a single line of code.

Alerts and Notifications

Configure Extender to monitor selected fields. When changes occur, trigger real-time email alerts, or display details on Sage 300 screens using Orchid Notes.

Logging

Create an audit trail of key changes to the Sage 300 database. Log what changed, when it changed, who made the change. Access logs using context-sensitive screen icons.

Integration

Synchronize between systems more efficiently by calling external programs when changes occur within Sage 300.

Workflow

Add consistency and transparency to approvals and other critical business processes with structured workflows. Pre-defined Workflow Actions cater for common business scenarios. Monitor and manage progress with the Workflow Console.



Let remote workers participate in workflows with Remote Action Service and/or the Workflow Anywhere mobile App.

The screenshot illustrates the integration of Extender with Sage 300. It shows three main components:

- ORCEWF - A/R Customers:** A form where the credit limit for customer BARMART is being updated from 40,000.00 to 55,000.00.
- ORCEWF - Extender Log:** A table showing the system's record of this change.

Time	User ID	Change Number	User ID	Key	Field Name	New Value
11/02/2021 17:59:37	AR0024	1	ANNE	BARMART	AMTCRLMT	55000.000
11/02/2021 17:59:24	AR0024	1	ANNE	BARMART	AMTCRLMT	40000.000
8/02/2021 15:03:00	AR0024	1	NATHALIE	BARMART	AMTCRLMT	15000.000
- ORCEWF - Extender Workflow Console:** A table showing the workflow instance triggered by the credit limit change.

Template ID	Started On	Started At	Started By	Assigned To	New ID	Record Key	Description	Requested Value
AP Invoice Batch Post	16/12/2020	14:24:35	ANNE	ACCOUNTS	AP0020	85	85-Trade show expenses-Batch Status = "Ready to Post"	216.50
Create EFT File Approval	16/12/2020	14:24:35	ANNE	ACCOUNTS	AP0030	PY.1	Approval required for Batch PY.1 - A/P Payment batch	36710.25
AP Vendor Approval	16/12/2020	14:25:25	ANNE	ACCOUNTS	AP0015	1202	Vendor Approval Orchidee Systems - Entry 2-1202 - New Vendor Ac.	Active
Sales Order Approval	16/12/2020	14:38:44	ANNE	SALESMGR	OE0520	ORPO000000000133	Approve - Enclosed note books for Christmas for customer 1520...	4,590.30
Sales Order Approval	16/12/2020	14:59:48	ANNE	SALESMGR	OE0520	ORPO000000000135	Approve - New office fit-out for customer 1500-Dan Paris	8,902.80
RMA Approval	16/12/2020	17:03:28	ANNE	SALESMGR	RAA001	REP00000000000001	Approve RMA for 1200 - Mr. Ronald Black - Repair for items in 1202	159.38
RMA Approval	16/12/2020	17:25:42	ANNE	SALESMGR	RAA001	WIP0000000000000005	Approve RMA for 1500 - Custom Comfort - Warranty Repairs for Inv...	40.94
RMA Approval	16/12/2020	17:25:42	ANNE	FINMGR	AR0024	8330	The Paper Hangers are on hold, reason: They processed in the last...	Nil
			ANNE	FINMGR	AR0024	BARMART	New credit limit entered - Bargain Mart Stores Inc.	55000.000

Orange arrows indicate the flow of information: from the credit limit change in the Sage 300 form, to the log entry, and then to the workflow console instance.

Customer Credit Limit change triggers email, Extender Log entry and Extender Workflow instance

Work *smarter* with Orchid

Extender Developer

The Developer edition includes all the Configurator features, while also letting you take customization of Sage 300 to the next level using Python scripts.

Business Logic (Sage 300 Views)

Introduce custom validations, conditional alerting, or automate business processes.

Screen Customizations

Modify existing screens in ways not possible at the View level (e.g. tailor tabs, fields, buttons, and finders). Create new screens without the need for complicated programming.

Custom Tables

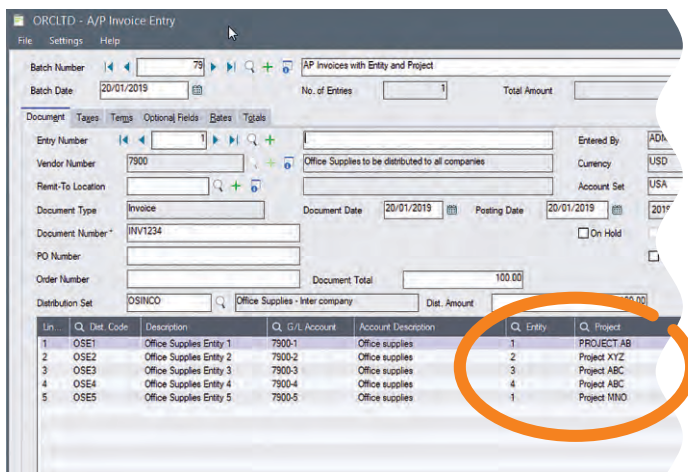
Create Sage 300 Views and associated tables, without coding. These form part of the Sage 300 database and database dictionary, so they can be accessed, dumped and loaded just like any other view.

Advanced Workflow

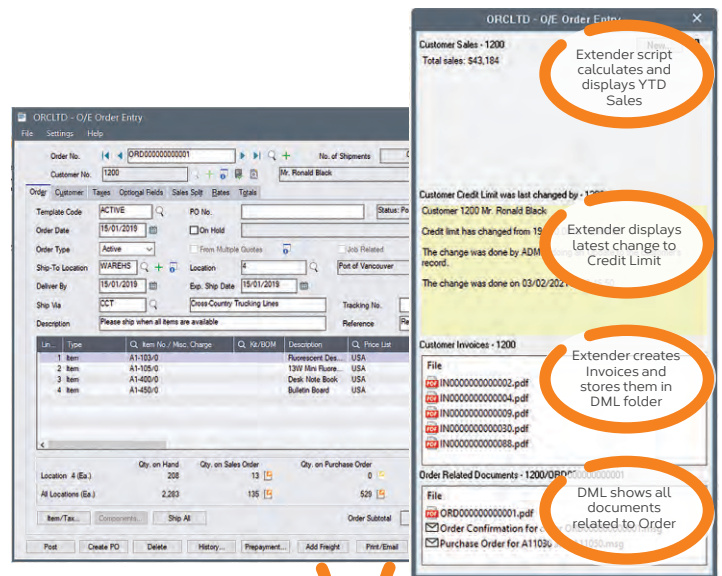
Develop custom Workflow Actions using Python to complement our pre-defined actions. Incorporate Custom View/Table data into Workflow Actions.

Advanced Integration

Eg. integrate Sage 300 with cloud-based collaboration tools, or send shipment details to the warehouse when an order is placed.



Screen Customization with Optional Fields (Entity & Project) added to the AP Invoice Detail grid



Custom button to Add Freight to order

Custom button to Print & Email Invoice

Extender adds custom buttons to Order Entry screen, and uses Orchid Notes and Document Management Link (DML) to display relevant data and files



Combine Extender Developer and Orchid Notes to generate dynamic, feature-rich 'Extended Notes'.

Why Python?

Python is a widely used, open-source language that consistently tops "most popular language" industry surveys. We chose it as the scripting language for Extender because:

- It is an interpreted language (no compiler needed)
- Customization scripts can be stored in the Sage 300 company database
- Source code is self-documenting, and can be amended on site
- It supports the use of thousands of well-tested, open-source libraries

More information

Further information about Extender, including videos, is available from Orchid's Website: www.orchid.systems/products/extender.

Minimum Requirements

Extender requires the compatible version of Sage 300 System Manager. Workflow User licences are required to access Extender Workflow functionality. Notes functionality requires Orchid Notes. Document Management Link is required to display documents. Python is installed as part of Extender. Features relate to the latest supported version.

Contact your Sage Software Solution Provider

© 2021 Orchid Systems. All rights reserved.

All trademarks are registered trademarks or trademarks of their respective companies.

v-21.2

