



Info-Explorer

“A powerful, affordable BI tool supporting integrated analysis & budgeting”

OUR DECISION MAKING IS SO MUCH FASTER AND BETTER INFORMED NOW.



Why use Info-Explorer?

Analyze business performance in multi-dimensional cubes, with the familiarity of a spreadsheet-type layout. Combine data from multiple sources. Ideal for integrated analysis and budgeting.

Data Sources & Processing

- Fed from your Sage 300 database, with background in-memory processing
- Include data from other SQL & ODBC databases, e.g. CRM
- Incorporate user-defined calculations
- Work online or offline
- Export views to Microsoft Excel®, CSV or HTML
- Security options to protect your data

 Combine with **Process Scheduler** to automate the refresh and distribution of Info-Explorer cubes.

Slice & Dice Analysis

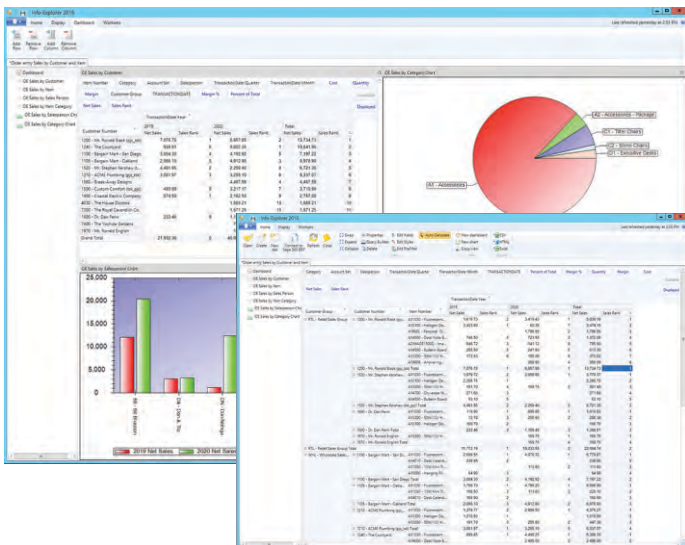
- Change dimensions (e.g. product, customer, region, period, employee) for clearer insight
- Dynamically control your view, filter your data, add and remove facts and dimensions
- Drill through to Sage 300 data entry screens for more information
- Roll up and consolidate to focus on high-level results

Presentation & Personalization

- Create and save multiple views, and convert to charts
- Create your own dashboards, highlighting exceptions and trends
- Apply your own formatting styles, e.g. 'traffic light' reporting
- Personalize, e.g. use custom styles to highlight amended data

Lite Edition – Free!

- A free, functional edition - no time limit, no commitment
- Add intuitive BI to any Sage 300 implementation
- Analyze your own data within pre-defined sample cubes
- No need to upgrade, unless you want additional features



Dashboard and View analyzing Sales Ranking

Work *smarter* with Orchid

Budgeting Features

The Writeback edition lets you use the same interface for analysis and budgeting:

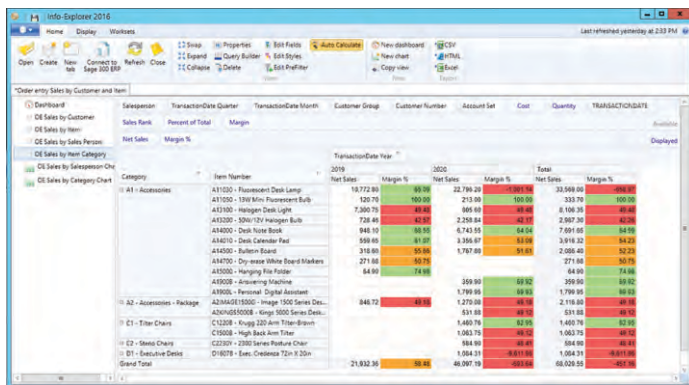
- Budget beyond General Ledger level
- Build budgets bottom-up or top-down
- Insert a budget total and let Info-Explorer populate the build-up
- Adjust budgets using multiple spread methods
- Maintain multiple budget versions
- Write budget data back to your Sage 300 database
- Combine actual and budget data for forecasting

 Use **Optional Tables** to store custom data in Sage 300, then incorporate it into your budgets and forecasts using Info-Explorer

Sample Cubes Included

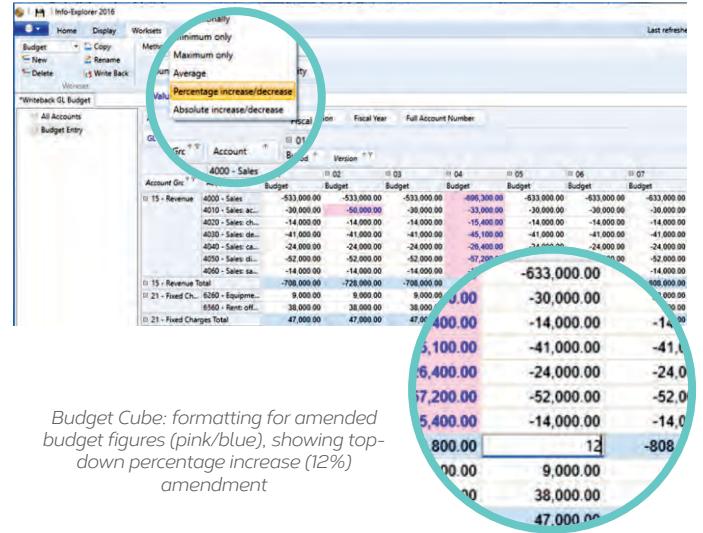
Use them to simplify getting started, or as a base for creating your own cubes. Available for:

- Sage 300 GL, AR, AP, PO, PJC, IC, OE/Sales Analysis
- Sage 300 US & Canadian Payroll
- Orchid Extender, RMA, Bin Tracking
- Budgeting
- Selected 3rd Party products



Item Number	2019 Net Sales	Margin %	Total Net Sales	Margin %
A11000 - Fluorescent Desk Lamp	182,772.93	59.78	22,789.28	59.88
A11000 - 13W Mini Fluorescent Bulb	120.78	100.00	213.55	100.00
A11000 - Halogen Desk Light	7,300.79	49.49	895.49	49.49
A10300 - 30W 12V Halogen Bulb	728.48	49.98	2,159.84	44.17
A34000 - Desk Nurse Book	948.90	88.91	6,743.55	64.04
A34010 - Desk Calendar Pad	569.88	81.01	3,356.87	81.01
A14000 - Rubber Stamp	318.80	89.84	1,932.64	91.61
A44700 - Dry-erase White Board Blenders	271.88	50.79	271.88	50.79
A43000 - Hanging Kit Folder	64.90	74.68	64.90	74.68
A43008 - Archiving Machine	599.90	69.92	359.90	69.92
A39005 - Personal Digital Assistant	1,799.95	89.93	1,799.95	89.93
A2444010000 - Image 500 Series Desks	848.72	88.88	1,270.99	88.88
A2444050008 - King 5000 Series Desks	631.88	89.12	531.88	89.12
C1 - Tiller Chairs	1,480.76	82.95	1,480.76	82.95
C2008 - High Back Arm Tiller	1,680.76	84.92	1,680.76	84.92
E2 - Metal Chairs	884.90	88.49	884.90	88.49
E11 - Executive Desks	1,084.31	88.11	1,084.31	88.11
Grand Total	21,832.36	86.48	48,397.76	86.48

View showing traffic light reporting



Budget Cube: formatting for amended budget figures (pink/blue), showing top-down percentage increase (12%) amendment

Account	Budget	Budget	Budget	Budget	Budget	Budget
4000 - Sales	-533,000.00	-533,000.00	-533,000.00	-533,000.00	-533,000.00	-533,000.00
4010 - Sales ac...	-30,000.00	-50,000.00	-30,000.00	-33,000.00	-30,000.00	-30,000.00
4020 - Sales ch...	-14,000.00	-14,000.00	-14,000.00	-15,400.00	-14,000.00	-14,000.00
4030 - Sales dis...	-41,000.00	-41,000.00	-41,000.00	-41,000.00	-41,000.00	-41,000.00
4040 - Sales ca...	-24,000.00	-24,000.00	-24,000.00	-28,400.00	-24,000.00	-24,000.00
4050 - Sales d...	-52,000.00	-52,000.00	-52,000.00	-52,000.00	-52,000.00	-52,000.00
4060 - Sales sa...	-14,000.00	-14,000.00	-14,000.00	-14,000.00	-14,000.00	-14,000.00
15 - Revenue Total	798,000.00	728,000.00	708,000.00	638,000.00	668,000.00	698,000.00
21 - Fixed Chg...	9,000.00	9,000.00	9,000.00	9,000.00	9,000.00	9,000.00
6560 - Rent off...	38,000.00	38,000.00	38,000.00	38,000.00	38,000.00	38,000.00
21 - Fixed Charges Total	47,000.00	47,000.00	47,000.00	47,000.00	47,000.00	47,000.00

Edition Guide

LITE - FREE!

- Analyze your data with pre-defined cubes (*published on Orchid's Website*)
- Customize cubes, charts and dashboards (*but not underlying data queries*)

STANDARD

- Create new cubes
- Create new data queries (*or amend existing ones*)
- Export cube data

WRITEBACK

- Writeback to your Sage 300 database (*or other SQL and ODBC databases*)
- Budgeting (*see Budgeting Features on this page*)

 My client loves Orchid Info-Explorer. In their words, it has them 'purring like a kitten'.

MARK BINKLEY, DATAQUEST SOLUTIONS, IL, USA

More information

Further information about Info-Explorer, including videos, is available from Orchid's Website: www.orchid.systems/products/info-explorer.

Minimum Requirements

Requires Microsoft .NET Framework 4 and a supported version of Windows. Licensed per PC. Users do not need to be logged into Sage 300 or need LanPaks unless they drill through to Sage 300 data-entry screens from the cube. Features relate to the latest supported version.

Contact your Sage Software Solution Provider

© 2021 Orchid Systems. All rights reserved.

All trademarks are registered trademarks or trademarks of their respective companies.

