



Info-Explorer



“A powerful, affordable BI tool supporting integrated analysis & budgeting”

Why use Info-Explorer?

Analyze business performance in multi-dimensional cubes, with the familiarity of a spreadsheet-type layout. Combine data from multiple sources. Ideal for integrated analysis and budgeting.

Data Sources & Processing

- Fed from your Sage 300 database, with background in-memory processing
- Include data from other SQL & ODBC databases, e.g. CRM
- Incorporate user-defined calculations
- Work online or offline
- Export views to Microsoft Excel®, CSV or HTML
- Security options to protect your data

Combine with **Process Scheduler** to automate the refresh and distribution of Info-Explorer cubes.

OUR DECISION MAKING IS SO MUCH FASTER AND BETTER INFORMED NOW.



Slice & Dice Analysis

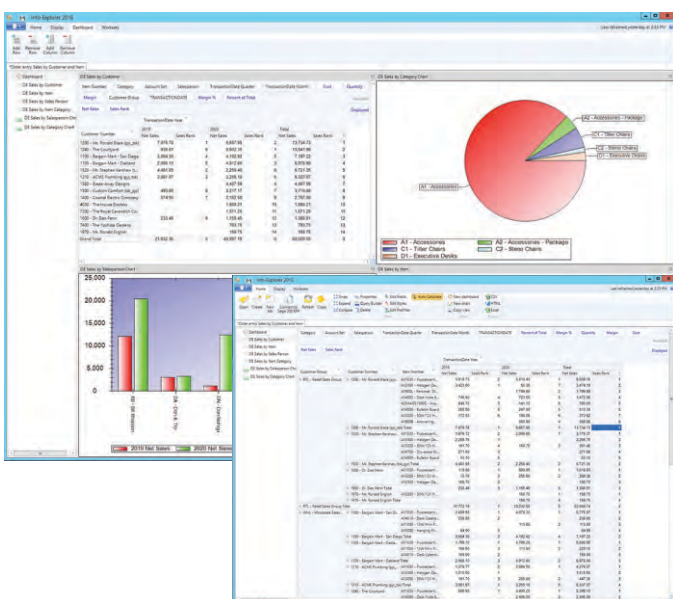
- Change dimensions (e.g. product, customer, region, period, employee) for clearer insight
- Dynamically control your view, filter your data, add and remove facts and dimensions
- Drill through to Sage 300 data entry screens for more information
- Roll up and consolidate to focus on high-level results

Presentation & Personalization

- Create and save multiple views, and convert to charts
- Create your own dashboards, highlighting exceptions and trends
- Apply your own formatting styles, e.g. 'traffic light' reporting
- Personalize, e.g. use custom styles to highlight amended data

Lite Edition – Free!

- A free, functional edition - no time limit, no commitment
- Add intuitive BI to any Sage 300 implementation
- Analyze your own data within pre-defined sample cubes
- No need to upgrade, unless you want additional features



Dashboard and View analyzing Sales Ranking

The Writeback edition lets you use the same interface for analysis and budgeting:

- Budget beyond General Ledger level
- Build budgets bottom-up or top-down
- Insert a budget total and let Info-Explorer populate the build-up
- Adjust budgets using multiple spread methods
- Maintain multiple budget versions
- Write budget data back to your Sage 300 database
- Combine actual and budget data for forecasting

-  Use **Optional Tables** to store custom data in Sage 300, then incorporate it into your budgets and forecasts using Info-Explorer

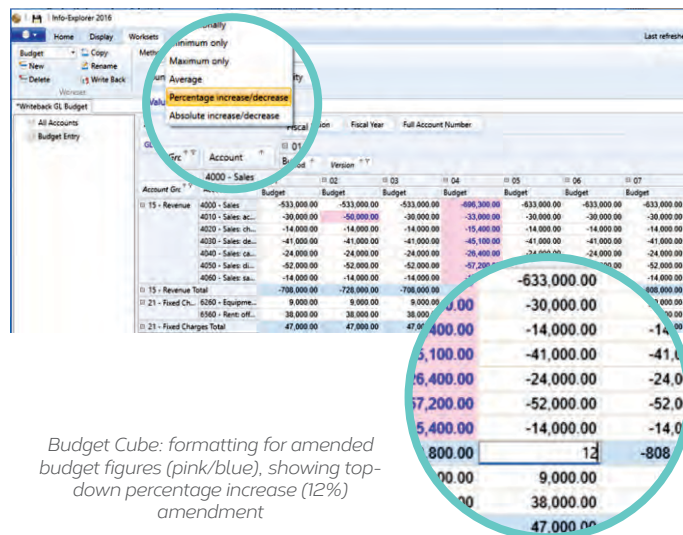
Use them to simplify getting started, or as a base for creating your own cubes. Available for:

- Sage 300 GL, AR, AP, PO, PJC, IC, OE/Sales Analysis
- Sage 300 US & Canadian Payroll
- Orchid Extender, RMA, Bin Tracking
- Budgeting
- Selected 3rd Party products

- [illegible]



OrchidSystems
www.orchid.systems
 SYDNEY | AUSTRALIA
 info@orchid.systems



Budget Cube: formatting for amended budget figures (pink/blue), showing top-down percentage increase (12%) amendment

LITE – FREE!

- Analyze your data with pre-defined cubes *(published on Orchid's Website)*
- Customize cubes, charts and dashboards *(but not underlying data queries)*

- STANDARD

- Create new cubes
- Create new data queries
(or amend existing ones)
- Export cube data

- WRITEBACK

- Writeback to your Sage 300 database
(or other SQL and ODBC databases)
- Budgeting
(see *Budgeting Features* on this page)

-  My client loves Orchid Info-Explorer. In their words, it has them 'purring like a kitten'.
- MARK BINKLEY, DATAQUEST SOLUTIONS, IL, USA**

Further information about Info-Explorer, including videos, is available from Orchid's Website:
www.orchid.systems/products/info-explorer.

Minimum Requirements

Requires Microsoft .NET Framework 4 and a supported version of Windows. Licensed per PC. Users do not need to be logged into Sage 300 or need LanPaks unless they drill through to Sage 300 data-entry screens from the cube. Features relate to the latest supported version.

Contact your Sage Software Solution Provider

All trademarks are registered trademarks or trademarks of their respective companies.