



# Extender

“A cost-effective way to configure, customize and extend Sage 300”

## Why use Extender?

- Customize Sage 300 without complex code
- All configurations and scripts stored securely in your Sage 300 database
- Easy to upgrade, no need to recompile your customizations
- Works with all Sage 300 core modules, plus 3rd Party modules developed in the SDK



## Extender Configurator

The Configurator edition lets you tailor Sage 300 without writing a single line of code.

## Alerts and Notifications

Configure Extender to monitor selected fields. When changes occur, trigger real-time email alerts, or display details on Sage 300 screens using Orchid Notes.

## Logging

Create an audit trail of key changes to the Sage 300 database. Log what changed, when it changed, who made the change. Access logs using context-sensitive screen icons.

## Integration

Synchronize between systems more efficiently by calling external programs when changes occur within Sage 300.

## Workflow

Add consistency and transparency to approvals and other critical business processes with structured workflows. Pre-defined Workflow Actions cater for common business scenarios. Monitor and manage progress with the Workflow Console.

Let remote workers participate in workflows with Remote Action Service and/or the Workflow Anywhere mobile App.

The screenshot displays three overlapping windows from the ORCEWF - Extender application:

- ORCEWF - A/R Customers:** Shows customer details for 'BARMART' (Bargain Mart Stores Inc.). The 'Credit Bureau Information' section shows a credit limit of 55,000.00.
- ORCEWF - Extender Log:** A table showing transaction history with columns for Date, Time, View ID, Change Number, User ID, Key, Field Name, and New Value.
 

Date	Time	View ID	Change Number	User ID	Key	Field Name	New Value
11/02/2021	17:59:37	AR0024	1	ANNE	BARMART	AMTCRLMT	55000.000
11/02/2021	17:59:24	AR0024	1	ANNE	BARMART	AMTCRLMT	40000.000
8/02/2021	15:03:00	AR0024	1	NATHALIE	BARMART	AMTCRLMT	15000.000
- ORCEWF - Extender Workflow Console:** Shows a list of workflow instances with columns for Template ID, Started On, Started At, Started By, Assigned To, New ID, Record Key, Description, and Requested Value. One instance is highlighted in orange, indicating it is urgent.
- Email Notification:** A screenshot of an email from 'communications@samplecompany.ltd' stating: 'Customer BARMART Bargain Mart Stores Inc. credit limit has changed. The change was done by ANNE doing an Update to the customer's record. The change was done on 11/02/2021 at 17:59:37.'

Customer Credit Limit change triggers email, Extender Log entry and Extender Workflow instance

# Work **Smarter** with Orchid

## Extender Developer

The Developer edition includes all the Configurator features, while also letting you take customization of Sage 300 to the next level using Python scripts.

### Business Logic (Sage 300 Views)

Introduce custom validations, conditional alerting, or automate business processes.

### Screen Customizations

Modify existing screens in ways not possible at the View level (e.g. tailor tabs, fields, buttons, and finders). Create new screens without the need for complicated programming.

### Custom Tables

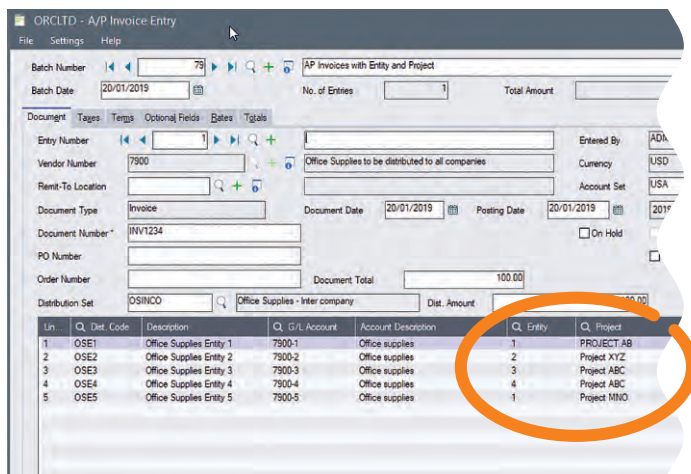
Create Sage 300 Views and associated tables, without coding. These form part of the Sage 300 database and database dictionary, so they can be accessed, dumped and loaded just like any other view.

### Advanced Workflow

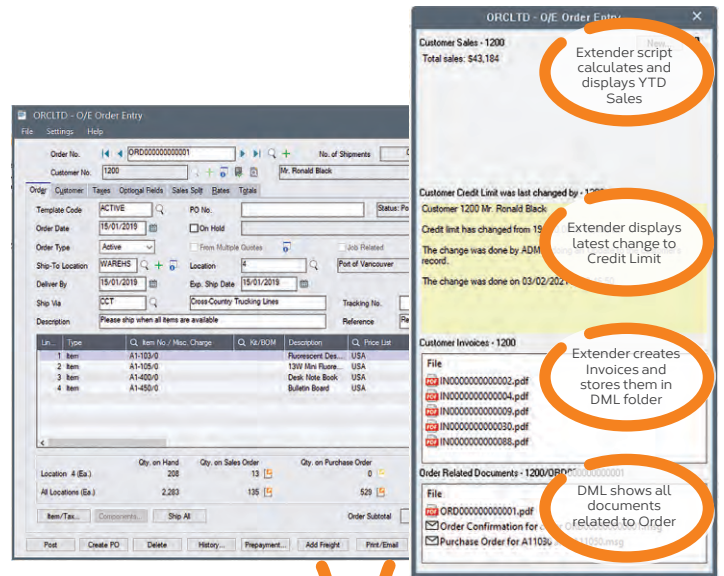
Develop custom Workflow Actions using Python to complement our pre-defined actions. Incorporate Custom View/Table data into Workflow Actions.

### Advanced Integration

Eg. integrate Sage 300 with cloud-based collaboration tools, or send shipment details to the warehouse when an order is placed.



Screen Customization with Optional Fields (Entity & Project) added to the AP Invoice Detail grid



Extender adds custom buttons to Order Entry screen, and uses Orchid Notes and Document Management Link (DML) to display relevant data and files

Combine Extender Developer and Orchid Notes to generate dynamic, feature-rich 'Extended Notes'.

### Why Python?

Python is a widely used, open-source language that consistently tops "most popular language" industry surveys. We chose it as the scripting language for Extender because:

- It is an interpreted language (no compiler needed)
- Customization scripts can be stored in the Sage 300 company database
- Source code is self-documenting, and can be amended on site
- It supports the use of thousands of well-tested, open-source libraries

### More information

Further information about Extender, including videos, is available from Orchid's Website: [www.orchid.systems/products/extender](http://www.orchid.systems/products/extender).

### Minimum Requirements

Extender requires the compatible version of Sage 300 System Manager. Workflow User licences are required to access Extender Workflow functionality. Notes functionality requires Orchid Notes. Document Management Link is required to display documents. Python is installed as part of Extender. Features relate to the latest supported version.

### Contact your Sage Software Solution Provider

© 2021 Orchid Systems. All rights reserved.

All trademarks are registered trademarks or trademarks of their respective companies.

