



Extender

“A cost-effective way to configure, customize and extend Sage 300”

Why use Extender?

- Customize Sage 300 without complex code
- All configurations and scripts stored securely in your Sage 300 database
- Easy to upgrade, no need to recompile your customizations
- Works with all Sage 300 core modules, plus 3rd Party modules developed in the SDK



Extender Configurator

The Configurator edition lets you tailor Sage 300 without writing a single line of code.

Alerts and Notifications

Configure Extender to monitor selected fields. When changes occur, trigger real-time email alerts, or display details on Sage 300 screens using Orchid Notes.

Logging


Create an audit trail of key changes to the Sage 300 database. Log what changed, when it changed, who made the change. Access logs using context-sensitive screen icons.

Integration

Synchronize between systems more efficiently by calling external programs when changes occur within Sage 300.

Workflow

Add consistency and transparency to approvals and other critical business processes with structured workflows. Pre-defined Workflow Actions cater for common business scenarios. Monitor and manage progress with the Workflow Console.

 Let remote workers participate in workflows with Remote Action Service and/or the Workflow Anywhere mobile App.

ORCEWF - A/R Customers

Customer Number: BARMART
Customer Name: Bargain Mart Stores Inc.

Account Type: Open Item
Account Set: USA
Terms Code: N30
Billing Cycle: BILLMT
Interest Profile: INTWHS
Payment Code: CHECK
Delivery Method: Mail
Credit Bureau Information: Number 1452, Rating AA, Date 05-2010

ORCEWF - Extender Log

From	Time	View ID	Change Number	User ID	Key	Field Name	Old Value	New Value
11/02/2021	17:59:37	AR0024	1	ANNE	BARMART	AMTCRLIMIT	40000.000	55000.000
8/02/2021	15:03:00	AR0024	1	NATHALIE	BARMART	AMTCRLIMIT	15000.000	35000.000

ORCEWF - Extender Workflow Console

Template ID	Started On	Started At	Started By	Assigned To	View ID	Record Key	Description	Requested Value
AP Invoice Batch Post	16/12/2020	14:24:35	ANNE	ACCOUNTS	AP0020	86	86-Trade show expenses Batch Status = "Ready to Post"	218.50
Create EFT File Approval	16/12/2020	14:24:55	ANNE	ACCOUNTS	AP0030	PT.1	Approval required for Batch PT.1 - A/P Payment batch	36710.25
AP Vendor Approval	16/12/2020	14:25:25	ANNE	ACCOUNTS	AP0015	1202	Vendor Approval Orchid Systems - Entry 21022 - New Vendor Ac	Active
Sales Order Approval	16/12/2020	14:35:44	ANNE	SALESMGR	DE0520	ORD000000000133	Approve - Embossed note books for Christmas for customer 1525	4,990.00
Sales Order Approval	16/12/2020	14:59:48	ANNE	SALESMGR	DE0520	ORD000000000135	Approve - New office fit out for customer 1600 Dr. Dan Parn	8,902.80
RMA Approval	16/12/2020	17:03:28	ANNE	SALESMGR	RA0001	REP00000000000001	Approve RMA for 1200 - Mr. Ronald Black - Repair for items on 1942	159.38
RMA Approval	16/12/2020	17:58:42	ANNE	SALESMGR	RA0001	WH00000000000005	Approve RMA for 1500 - Custom Contact - Warranty Repair for try	40.94
FINMGR	AR0024	8330					The Paper Hangers set on hold, reason: They promised to pay	
FINMGR	AR0024	BARMART					New credit limit entered - Bargain Mart Stores Inc.	55000.000

Email Notification:
communications@samplecompany.ltd
Customer BARMART Bargain Mart Stores Inc. credit limit has changed
The change was done by ANNE doing an Update to the customer's record.
The change was done on 11/02/2021 6:00 PM
The change was done on 11/02/2021 17:59:37

Customer Credit Limit change triggers email, Extender Log entry and Extender Workflow instance

Work *smarter* with Orchid

Extender Developer

The Developer edition includes all the Configurator features, while also letting you take customization of Sage 300 to the next level using Python scripts.

Business Logic (Sage 300 Views)

Introduce custom validations, conditional alerting, or automate business processes.

Screen Customizations

Modify existing screens in ways not possible at the View level (e.g. tailor tabs, fields, buttons, and finders). Create new screens without the need for complicated programming.

Custom Tables

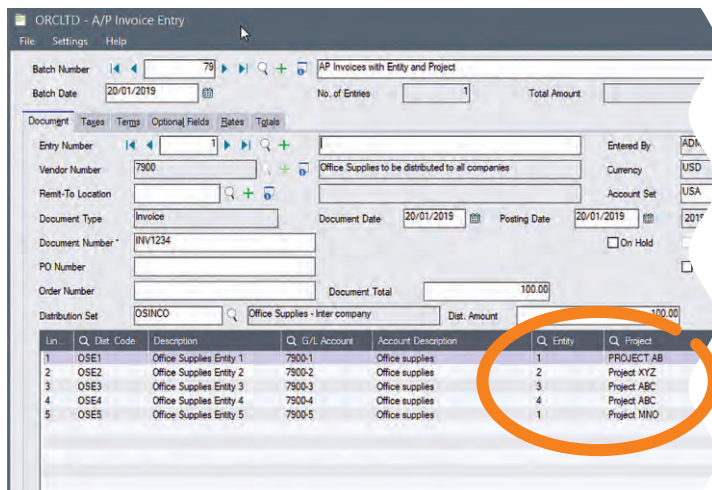
Create Sage 300 Views and associated tables, without coding. These form part of the Sage 300 database and database dictionary, so they can be accessed, dumped and loaded just like any other view.

Advanced Workflow

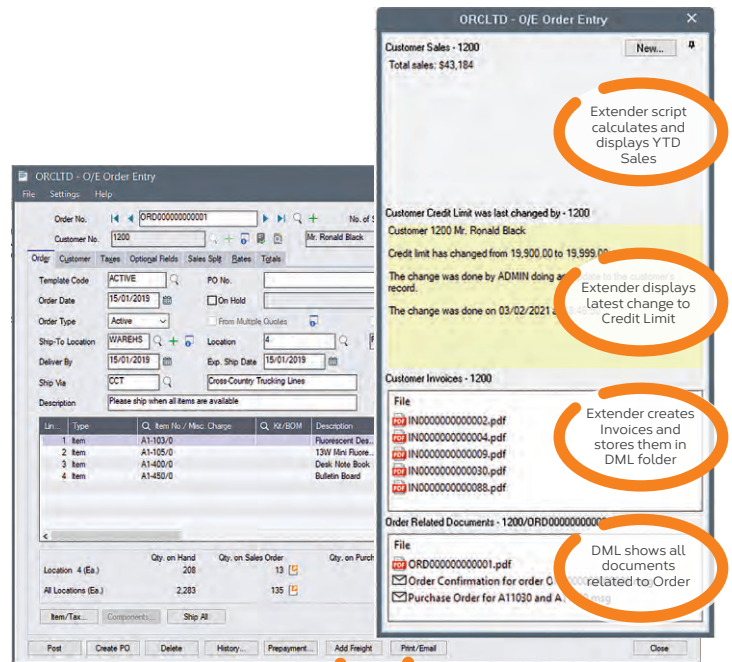
Develop custom Workflow Actions using Python to complement our pre-defined actions. Incorporate Custom View/Table data into Workflow Actions.

Advanced Integration


Eg. integrate Sage 300 with cloud-based collaboration tools, or send shipment details to the warehouse when an order is placed.



Screen Customization with Optional Fields (Entity & Project) added to the AP Invoice Detail grid



Extender adds custom buttons to Order Entry screen, and uses Orchid Notes and Document Management Link (DML) to display relevant data and files

 Combine Extender Developer and Orchid Notes to generate dynamic, feature-rich 'Extended Notes'.

Why Python?

Python is a widely used, open-source language that consistently tops "most popular language" industry surveys. We chose it as the scripting language for Extender because:

- It is an interpreted language (no compiler needed)
- Customization scripts can be stored in the Sage 300 company database
- Source code is self-documenting, and can be amended on site
- It supports the use of thousands of well-tested, open-source libraries

More information

Further information about Extender, including videos, is available from Orchid's Website: www.orchid.systems/products/extender.

Minimum Requirements

Extender requires the compatible version of Sage 300 System Manager. Workflow User licences are required to access Extender Workflow functionality. Notes functionality requires Orchid Notes. Document Management Link is required to display documents. Python is installed as part of Extender. Features relate to the latest supported version.

Contact your Sage Software Solution Provider

© 2021 Orchid Systems. All rights reserved.

All trademarks are registered trademarks or trademarks of their respective companies.

