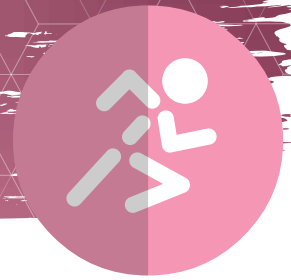


Report Runner

For Sage 300 (Accpac)



Development
Partner Endorsed
Development
Partner Gold



Launch and distribute recurring reports with ease
Group logically and create role-specific menus
Combine with Process Scheduler for added automation & control

WHAT IS REPORT RUNNER?

Report Runner, from Orchid Systems, forms the heart of your reporting and decision making. It places all your reports, from various Sage 300 (Accpac) modules, into central repositories for Crystal Reports and Sage 300 GL Financial Reports

This allows you to quickly and easily access and launch vital reports. Running recurring reports uses the familiar Sage 300 controls: finders, dates, periods and checkboxes. You can run multiple reports, distribute them by email, save parameters for running them again, and create specific report menus for different roles.

Report Runner controls report launching. By combining with Orchid Process Scheduler, you can also control when reports are executed and distributed, according to automated schedules.

BENEFITS

- Time saving: No need to hunt for recurring reports or set them up.
- Efficiency: Automate routine, repeated processes.
- Streamlined reporting: greater accuracy, reduced errors.
- Productivity: Easy access to the right reports, role specific menus.
- Security: users only see the reports applicable to them.
- Reduced complexity, training: just the reports users need.
- Better decision making with the right information at the right time.



Use with Orchid Process Scheduler to produce and distribute reports according to automated schedules.

ORCLTD - I/M Financial Report Runner

File Help

- Department 100
 - Balance Sheet - 100
 - Financial Ratios - 100
 - Income Statement - 100
- Department 200
 - Balance Sheet - 200
 - Financial Ratios - 200
 - Income Statement - 200
- My Saved Runs

Print Options

Print Options: Report Order

Balance Sheet - 100
Financial Ratios - 100
Income Statement - 100
Balance Sheet - 200
Financial Ratios - 200
Income Statement - 200

Print Options

Print Options | Report Order

Fiscal Year/Period: 2018-02

Print Destination: Excel

Destination: [Dropdown]

Save As: [Text Box] [Browse]

(D) - day eg "5"
(DD) - day eg "05"
(M) - month eg "1"
(MM) - month eg "01"
(MMM) - month eg "Jan"
(MMMM) - month eg "January"
(YY) - year eg "09"
(YYYY) - year eg "2009"

(h) - hour eg "2"
(hh) - hour eg "02"
(m) - minute eg "4"
(mm) - minute eg "04"
(s) - second eg "5"
(ss) - second eg "05"

(NAME) - report name
(FILENAME) - source file name (no path or extension)

Send Email

Message ID: FINREPORTS

Email addresses: orchid.modules@gmail.com

Note: Multiple email addresses can be entered separated by a semi-colon

Print Save As... Cancel

Select/Print Close



FEATURES

Flexibility

- Launch Crystal Reports and Sage 300 GL Financial Reports.
- Save report parameters to allow quick re-running.
- Keep reports together - group logically by function or process.
- Print, email and save reports. Store your default printer in Options.
- Create email templates for use when scheduling reports.
- Uses flexible parameters on your Crystal Reports or customized Sage 300 reports – finders, date and period pickers, check boxes

Ease of Use

- Easy to configure and deploy.
- Easy access to multiple reports, including custom reports.
- Export/import report setups from company to company, site to site.
- Developed in the Sage 300 SDK, with the familiar Sage 300 look and feel.

Access Control

- Create role-specific report menus, with pre-defined and tailored report parameters.
- Assign role-based report access to individual users.

Additional Features for Crystal Report Runner

- Crystal Reports can be exported to additional output types: PDF, Excel, Word, XML, CSV, RTF, TXT, TTX.
- Crystal Report Runner can be scheduled to print, store the required printer on the schedule record, and have a specific path and file name.
- Security on individual Crystal Reports (26 groups available).

"I love the control and flexibility that Orchid's Report Runner gives my customers. My only regret is that I hadn't taken the time to have a play with it sooner!"

PAUL FIELD, NET@WORK, WINDSOR, ONTARIO, CANADA

Report Runner setup for Crystal Reports



Information Manager Suite

Report Runner can be purchased on its own, but is distributed as part of Orchid's Information Manager suite of productivity tools. Other Information Manager sub-modules, which require separate licenses, are: Data Views, Document Management Link, Optional Tables, Notes, and Email SmartLink.

MINIMUM REQUIREMENTS

Report Runner 2020 requires Sage 300 2020. For scheduling, Orchid Process Scheduler is required.

Contact your Sage Software Solution Provider.

Copyright © 2019 Orchid Systems. All rights reserved.
All trademarks are registered trademarks or trademarks of their respective companies.

ORCHID SYSTEMS FOR BUSINESS

Suite 2 / 273 Alfred Street,
North Sydney, New South Wales
Australia 2060

+61 2 9099 1077
info@orchid.systems

 **OrchidSystems**
www.orchid.systems