

Inter-Entity Trade

For Sage 300 (Accpac)



Do you manage **multiple entities** that **trade** with each other?
Are you **expanding** into new **markets**, or across **borders**?
Is processing of **routine transactions** impeding **efficiency** and **growth**?

WHAT IS INTER-ENTITY TRADE?

Inter-Entity Trade, from Orchid Systems, automates the flow of transactions in Sage 300 (Accpac) when related entities (companies, branches, divisions etc.) buy and sell products or services to and from each other.

Reciprocal documents are created according to business rules you set up. When you initiate a transaction in one entity, Inter-Entity Trade creates the corresponding entries in the other. You no longer need to manually enter mirrored entries for each side of the transaction.

BUSINESS SCENARIO EXAMPLES

Example 1:

- Company A (Source company) sells goods to Company B (Target company), with OE Sales Order and OE Shipment documents being created in Company A.
- Inter-Entity Trade (IET) automates the generation of the corresponding Purchase Order and goods Receipt documents in Company B.
- Once the OE/AR Invoice has been issued by Company A, IET also generates the corresponding PO/AP Invoice in Company B.

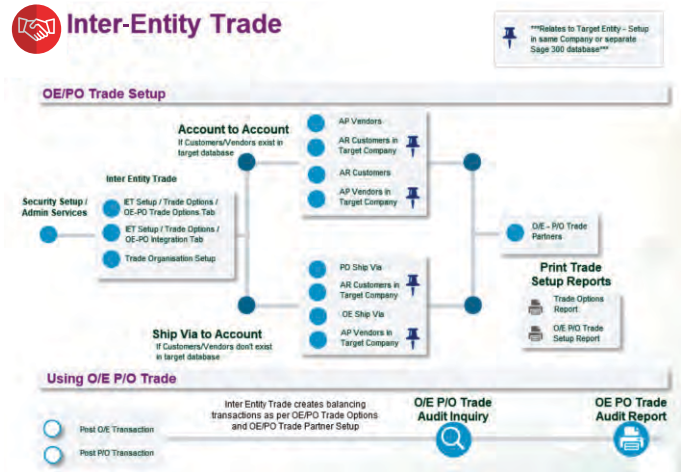
Example 2:

- Company B carries out services for Company A.
- Either Company can raise the Invoice, and IET will issue the corresponding AR or AP Invoice for the other party.
- Company A can pay the Invoice, and have IET automatically create the Receipt in Company B. Alternatively, Company B can enter the Receipt, and have IET create the Payment in Company A.

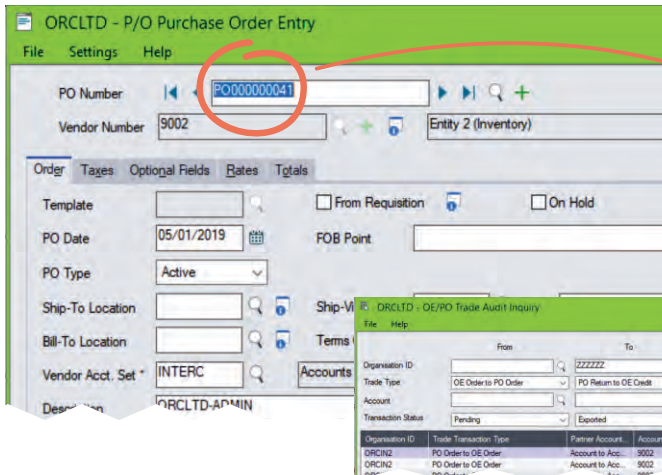
Other examples include Purchase Orders initiating OE Orders, and the mirroring of AR/AP Invoices and Credit Notes. See over for a comprehensive list of features.

BENEFITS

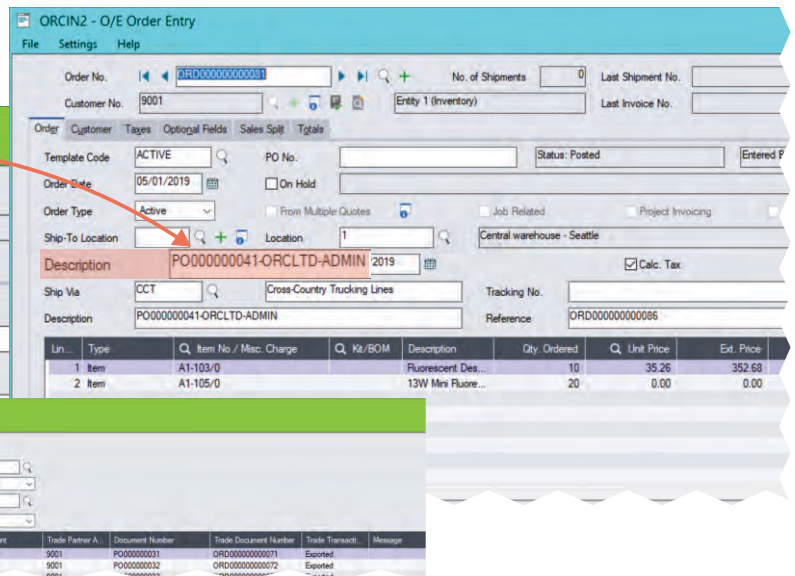
- Enhances productivity and efficiency by automating and streamlining business processes.
- Transactions are entered once and replicated across companies, eliminating the need to create and check duplicate entries.
- Automation means reduced human error, increased accuracy.
- Improves visibility of operations across a group of companies.
- Simplifies collaboration in complex organisations.



Visual Process Flow – OE/PO



Purchase Order PO0041 created



Extensive audit log

Order ORD0081 created in target company and associated description updated



FEATURES

SYSTEM

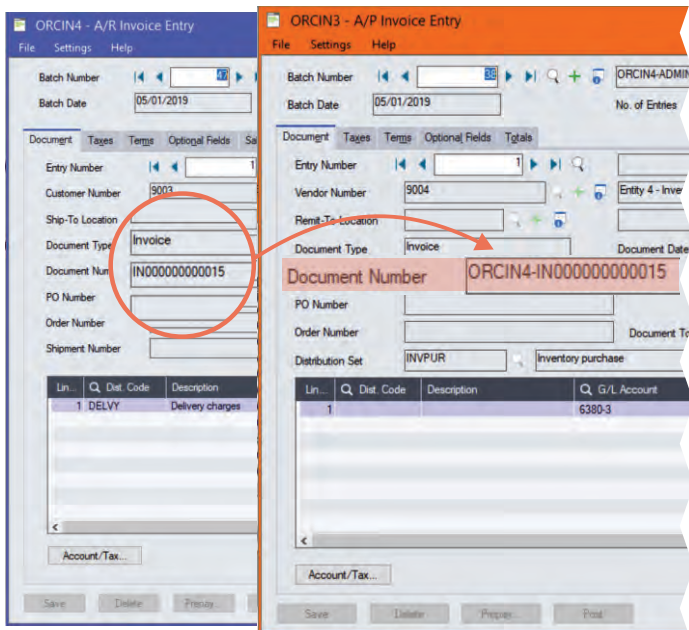
- Map which companies will trade with each other.
- Map information to flow through from document to document.
- Comprehensive audit logging to ensure that all transactions are accounted for.

TRADE AP TO AR, OR AR TO AP

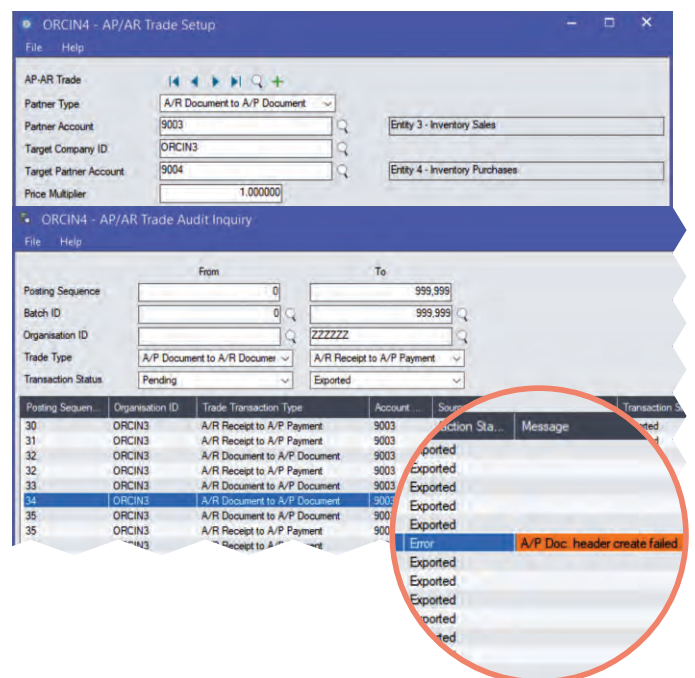
- Map AP Vendor in Source company to AR customer in Target company (or vice versa).
- Map Source document GL Account to Target document GL Account.
- Automate elimination entries in a consolidation or elimination company.
- Configuration options:
 - Specify a multiplier to mark up or mark down the Target document
 - Include Sage 300 Project & Job Costing fields to be transferred from Source document to Target document
- Create transactions from:
 - AP Invoices to AR Invoices
 - AR Invoices to AP Invoices
 - AP Credit Notes to AR Credit Notes
 - AR Credit Notes to AP Credit Notes
 - AP Payments to AR Receipts
 - AR Receipts to AP Payments

TRADE OE TO PO, OR PO TO OE

- Account to Account mapping. Map OE customer in Source company to PO vendor in Target company (or vice versa).
- "Ship Via" to Account Mapping. Map OE "Ship Via" in Source company to PO Vendor in Target company (or vice versa).
- Configuration options:
 - Include Sage 300 Project and Job Costing fields to be transferred from the Source document to the Target document
 - Include Sage 300 IC Serial and Lot Number fields to be transferred from the Source document to the Target document
 - Override the category on the Target OE documents to easily identify intergroup transactions for consolidated reporting
 - Override the location on the Target OE or PO documents to easily identify intergroup transactions for consolidated reporting
 - Map IC items across companies if not identical
- Allow bi-directional processing. E.g. if POs in Company 1 against Vendor 2 automatically created Sales Orders (SOs) in Company 2 against Customer 1, you could either:
 - "Receive" the PO, which will cause the SO to be shipped, or;
 - Ship the SO, which will cause the PO to be received
- Create documents from:
 - OE Orders to PO Orders
 - OE Shipments to PO Receipts
 - OE Invoices to PO Invoices
 - OE Credit Notes to PO Returns
 - PO Orders to OE Orders
 - PO Receipts to OE Shipments
 - PO Invoices to OE Invoices
 - PO Returns to OE Credit Notes



AR Invoice entered in ORCIN4, AP Invoice automatically generated in ORCIN3



Inter-Entity Trade AP/AP Setup, source & target transactions logged

MINIMUM REQUIREMENTS

Inter-Entity Trade 2020 requires Sage 300 2020 System Manager, General Ledger, Accounts Receivable and Accounts Payable. Inter-Entity Trade optionally works with Sage 300 2020 Order Entry, Inventory Control and Purchase Orders, and Orchid Inter-Entity Transactions.

Contact your Sage Software Solution Provider.

Copyright © 2019 Orchid Systems. All rights reserved.
All trademarks are registered trademarks or trademarks of their respective companies.

ORCHID SYSTEMS FOR BUSINESS

Suite 2 / 273 Alfred Street,
North Sydney, New South Wales
Australia 2060

+61 2 9099 1077
info@orchid.systems

 **OrchidSystems**
www.orchid.systems